

GROUP 52A INTERIOR

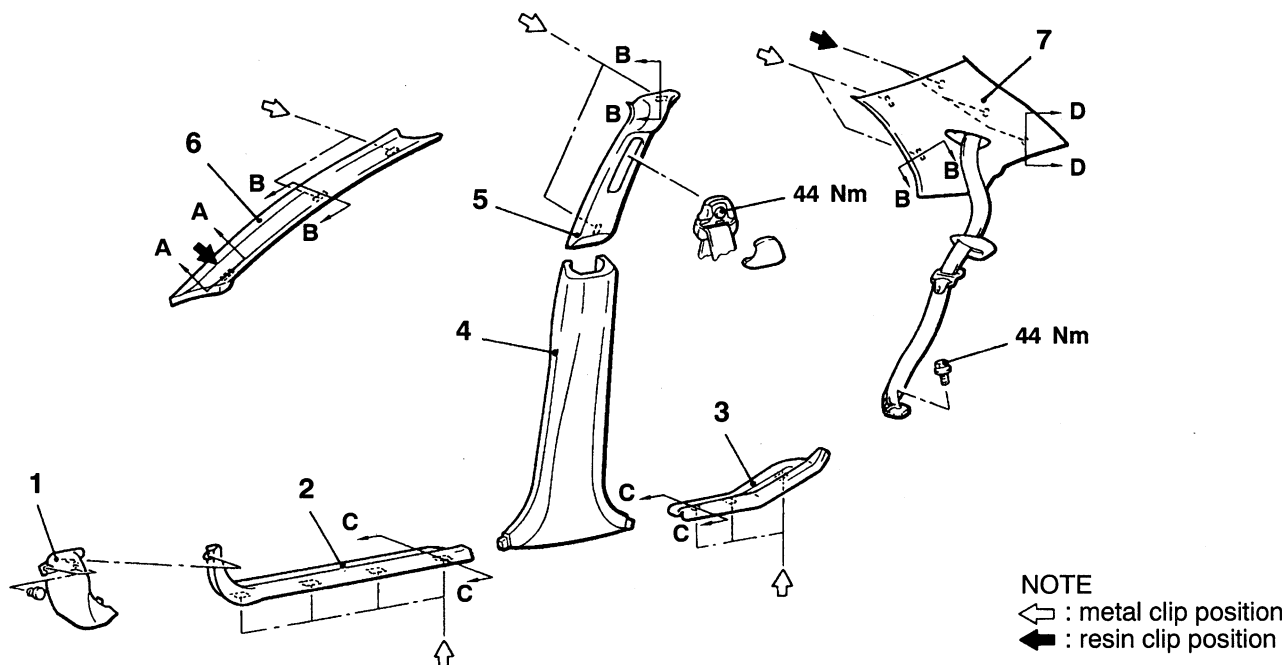
GENERAL

OUTLINE OF CHANGES

- The following service procedures have been added to correspond to the addition of the 4-door sedan.
Applicable models: 4-door sedan
 - Removal and installation of the trims
 - Removal and installation of the rear seat

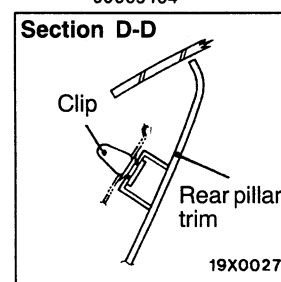
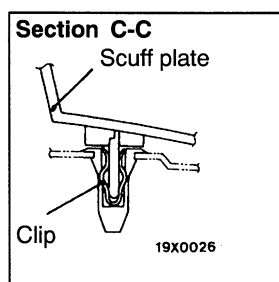
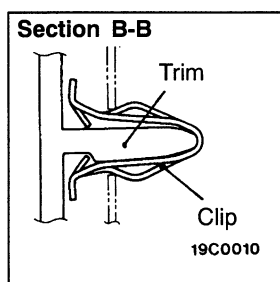
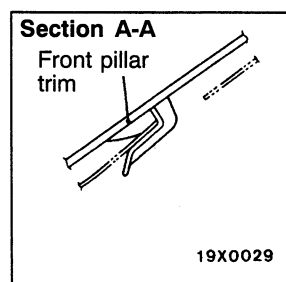
TRIMS

REMOVAL AND INSTALLATION



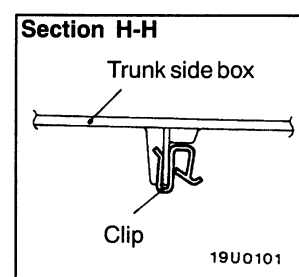
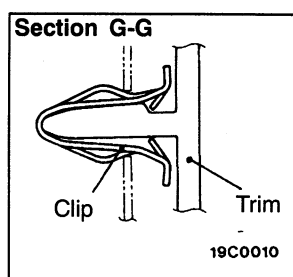
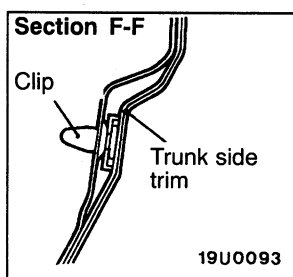
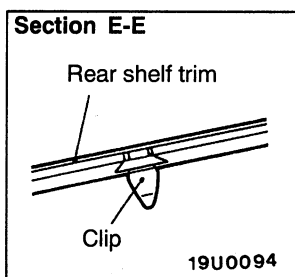
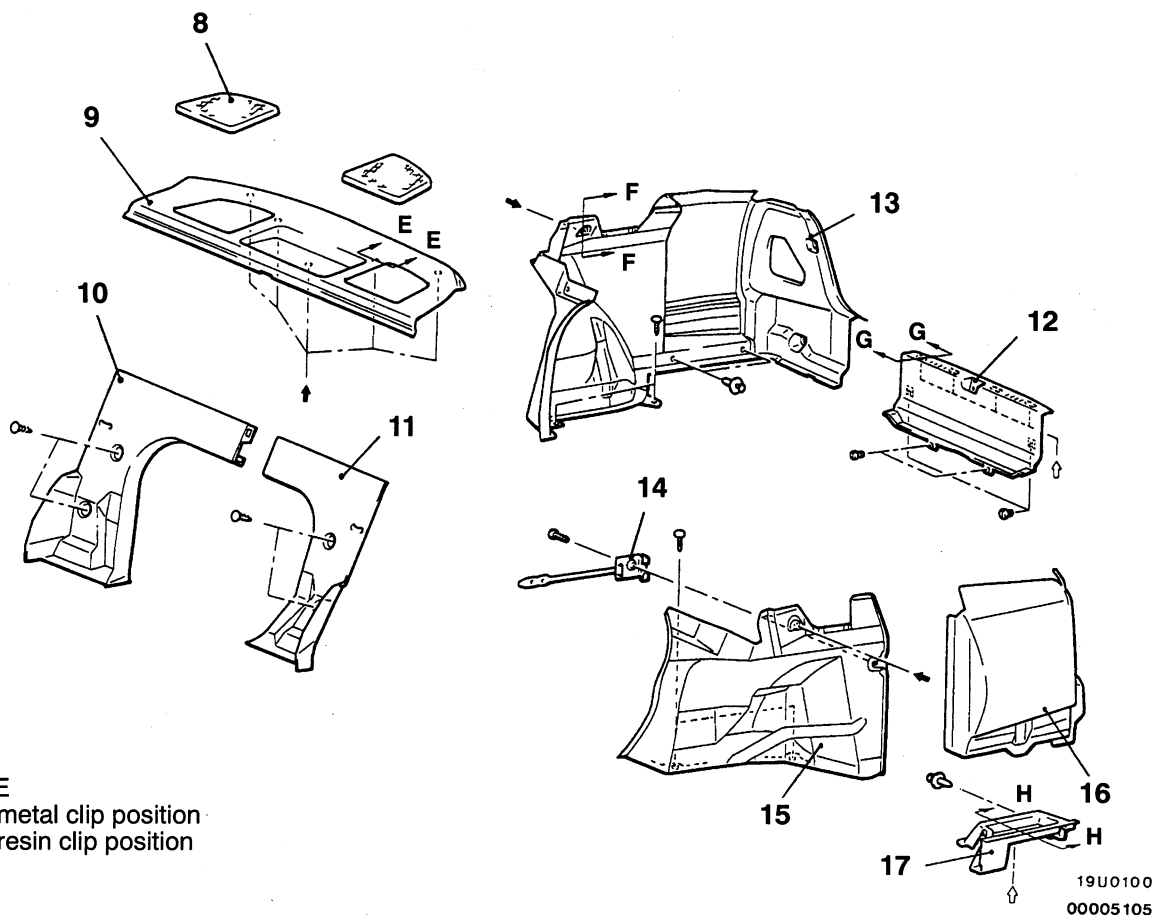
19U0097

00005104



- Cowl side trim
- Front scuff plate
- Rear scuff plate
- Center pillar lower trim

- Center pillar upper trim
- Front pillar trim
- Rear pillar trim



- 8. Rear speaker garnish
- 9. Rear shelf trim
- 10. Shelf front cover (RH) or trunk front trim
- 11. Shelf front cover (LH)
- 12. Rear end trim

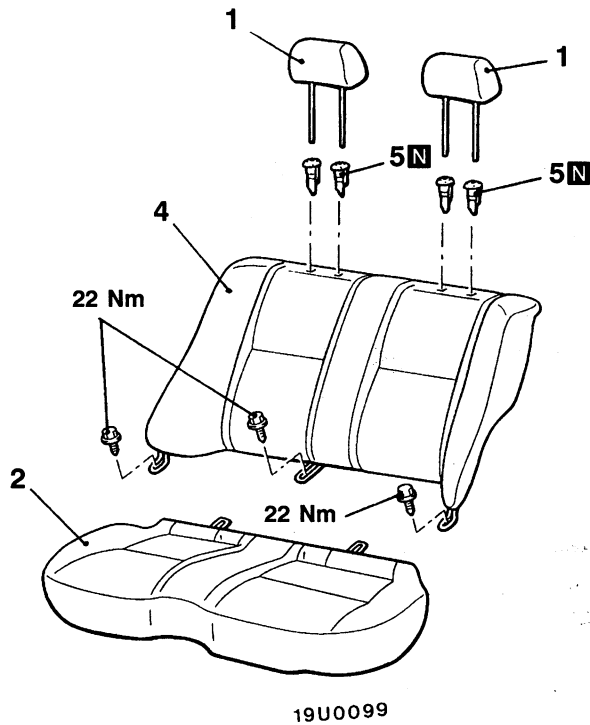
- 13. Trunk side trim (RH)
- 14. Hook assembly
- 15. Trunk side trim (LH)
- 16. Trunk rear trim
- 17. Trunk side box

SEAT

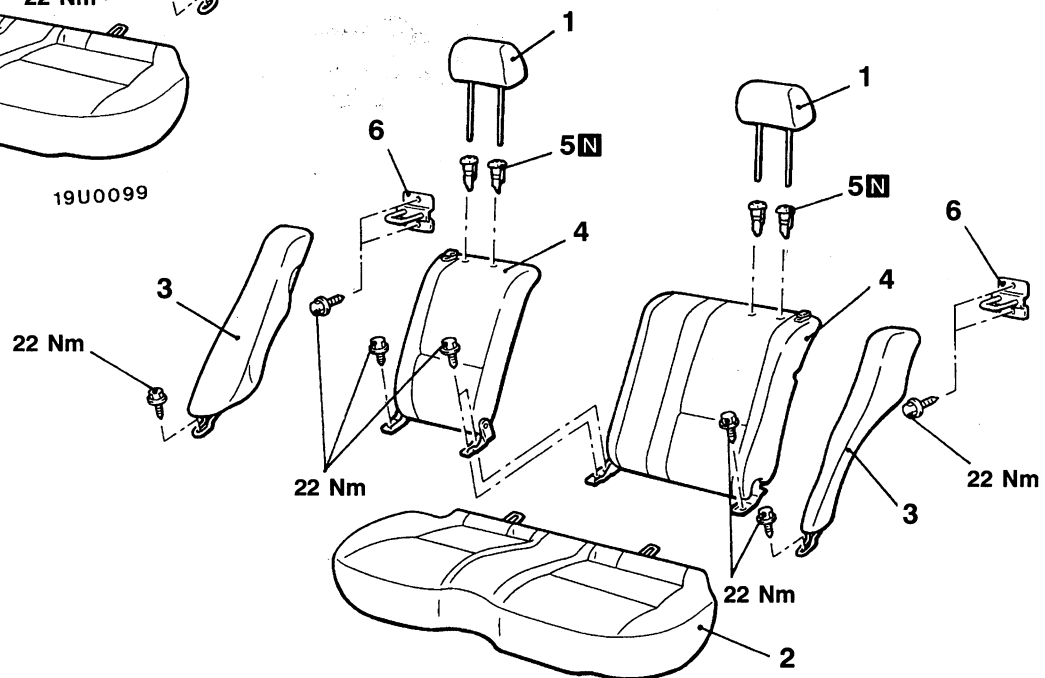
REAR SEAT

REMOVAL AND INSTALLATION

LOW BACK BENCH SEAT



LOW BACK SPLIT SEAT



19U0098

00005106

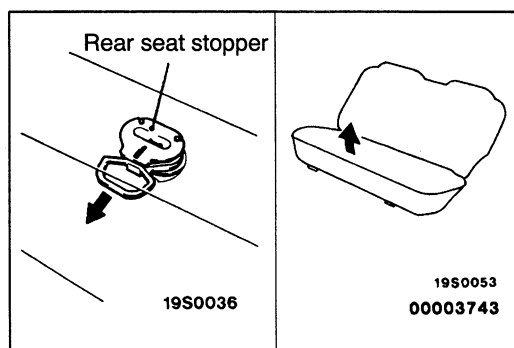
Removal steps



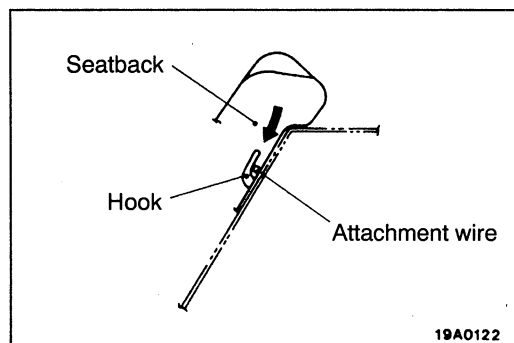
1. Headrest
2. Seat cushion
3. Side seatback assembly



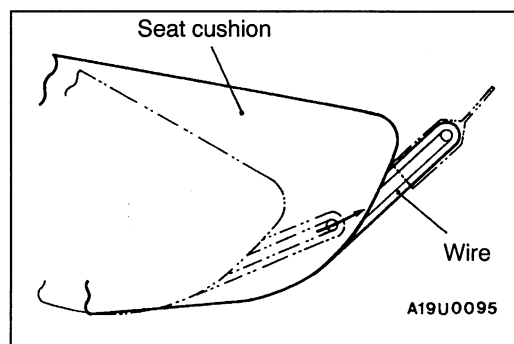
4. Rear seatback assembly
5. Headrest guide
6. Rear seat striker

**REMOVAL SERVICE POINT****◀A▶ SEAT CUSHION REMOVAL**

While keeping the rear seat stopper pulled, lift up the seat cushion to remove it.

**INSTALLATION SERVICE POINTS****▶A◀ REAR SEATBACK ASSEMBLY/SIDE SEATBACK ASSEMBLY INSTALLATION**

Push the rear seatback assembly or side seatback assembly in the direction indicated in the illustration; then securely attach the attachment wire to the body side hook and install the rear seatback assembly or side seatback assembly.

**▶B◀ SEAT CUSHION INSTALLATION**

Insert the wire of the seat cushion into the body hole to install the seat cushion.